

ACQUA DI  
COLONIA

allegri<sup>n</sup>.  
COSMETIC SOLUTIONS

# ACQUA DI COLONIA



CLASSICISM AND MODERN GLAMOUR



*Luxury and contemporary. Charm and vitality.*

*Now **Acqua di Colonia** was born, an amenities line where the freshness and enchantment of its timeless fragrance with its citrus notes combine with the more modern and dynamic spirit of its design. It is the ideal collection to give guests an **all-embracing wellness experience** that will make their stay even more pleasant and unique.*



LOVE FOR THE BODY,  
RESPECT FOR THE ENVIRONMENT

*All cosmetics are Made in Italy, with surfactants of vegetable origin, dermatologically tested, without silicones, mineral oils and raw materials of animal origin. They are also enriched with **wheat proteins**, ideal ingredients for caring for skin and hair, thanks to their **nourishing, protective and softening properties.***

*Acqua di Colonia is an **environmentally friendly collection**: its bottles and dispensers are all made of **100% r-PET**. Recycled and recyclable.*



amenities line





ACQUA DI  
COLONIA

bottles

BLACK BOTTLE AND CAP  
WITH MATT FINISHING LABEL

50 ml

soap

CARTON BOX  
IN RECYCLABLE PAPER

20 g

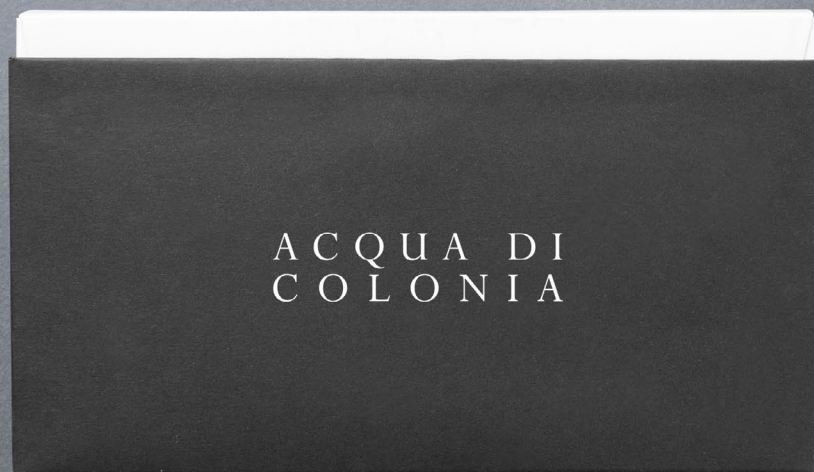




ACQUA DI  
COLONIA

gift box

RECYCLABLE PAPER BOX CONTAINING  
BOTTLES 50 ml (body lotion, hair conditioner, shampoo,  
shower gel) AND SOAP 20 g





dispensers







dispenser

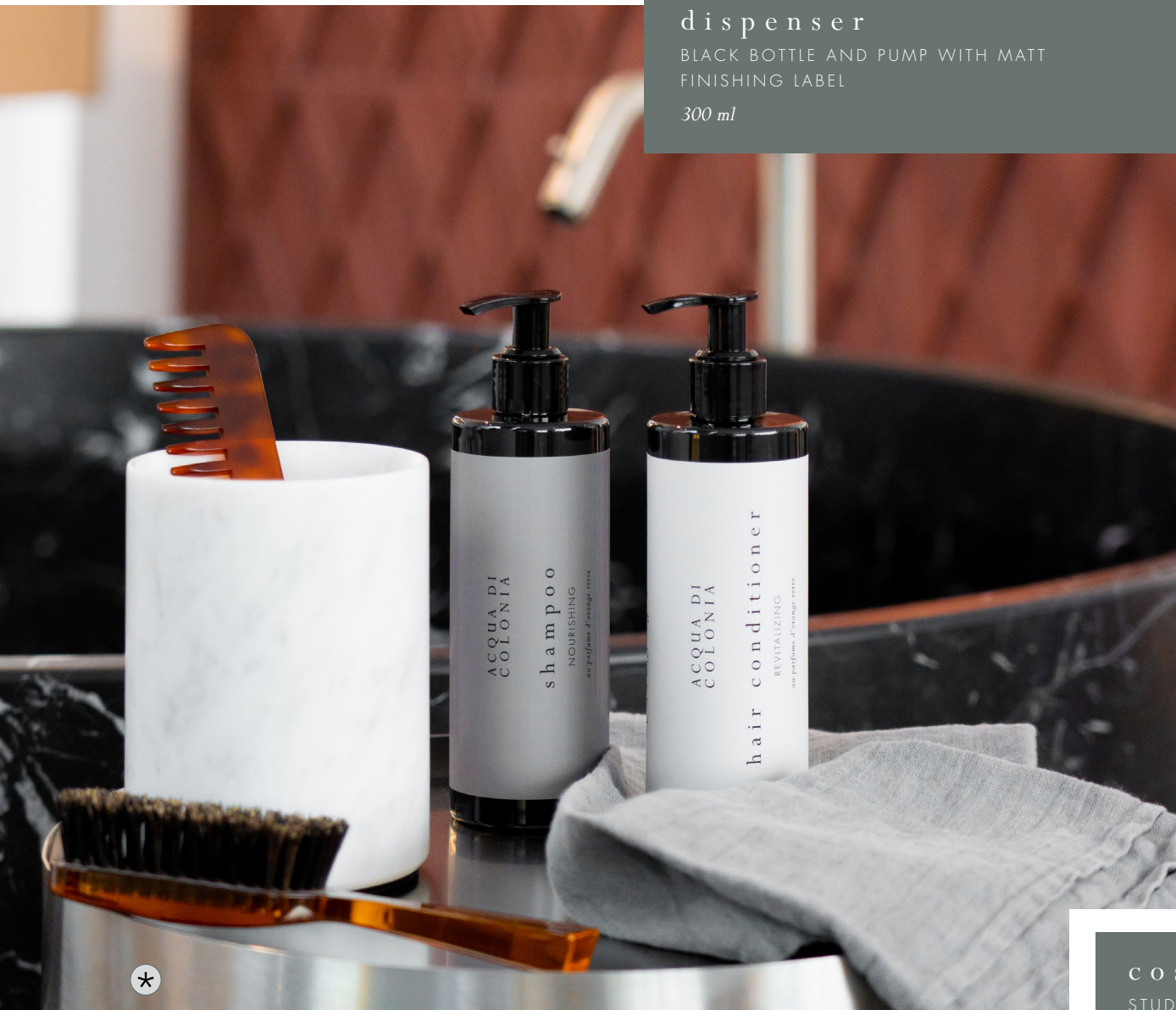
BLACK BOTTLE AND PUMP WITH MATT FINISHING LABEL (CAN  
BE COMBINED WITH BLACK PLASTIC OR STEEL WALL BRACKET)  
300 ml



dispenser

BLACK BOTTLE AND PUMP WITH MATT  
FINISHING LABEL

300 ml



cosmetic solutions

STUDIED AND TESTED IN FULL RESPECT OF THE BODY





DERMATOLOGICALLY TESTED  
WITH VEGETABLE ORIGIN SURFACTANTS  
NO ANIMAL SOURCE RAW INGREDIENT  
NO ANIMAL TESTING  
SILICONE FREE



body lotion  
MOISTURIZING

*A formulation ideal for moisturizing the skin which, after application, is soft and velvety.*

*A formulation with a gentle foam that cleanses, calms and nourishes, keeping skin in balance.*



shampoo  
NOURISHING

*It gently cleanses and leaves hair shiny and nourished. Suitable for all hair types, perfect for everyday use.*



soap  
SOFTENING

*A formulation with a gentle foam that cleanses, calms and nourishes, keeping skin in balance.*



shower gel  
REFRESHING  
liquid soap  
PURIFYING

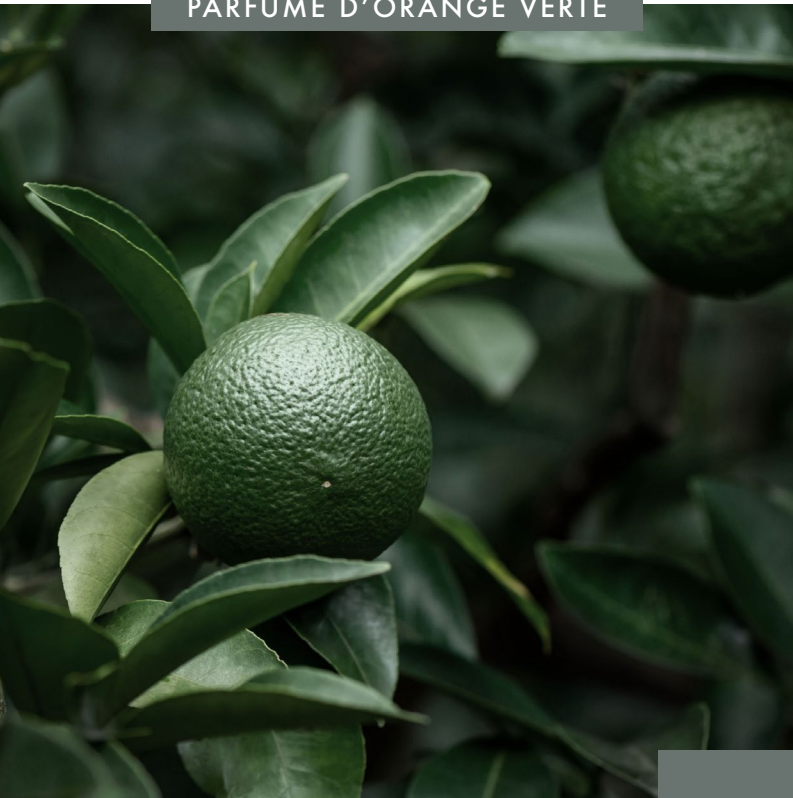


hair  
conditioner  
REVITALIZING

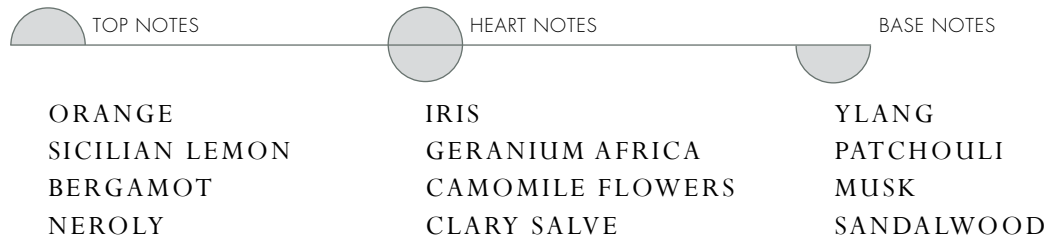
*It helps maintain and enhance the shine, moisturizing and disentangling the hair. Perfect for everyday use.*

# olfactory pyramid

PARFUME D'ORANGE VERTE



*A fragrance with a familiar exoticism, combining the floral heart of iris, geranium and chamomile with the Mediterranean scent of citrus fruits and the oriental delicacy of musks and woods of ylang, sandalwood and patchouli.*



**COLONIA.  
A FRAGRANCE THAT NEVER FADES.**



amenities line



COD. 02AA106200

soap

PAPER BOX

20 g e 0.71 oz. 



COD. 026BL106208

body lotion



COD. 026SG106202

shower gel



COD. 026SH106205

shampoo



COD. 026HC106204

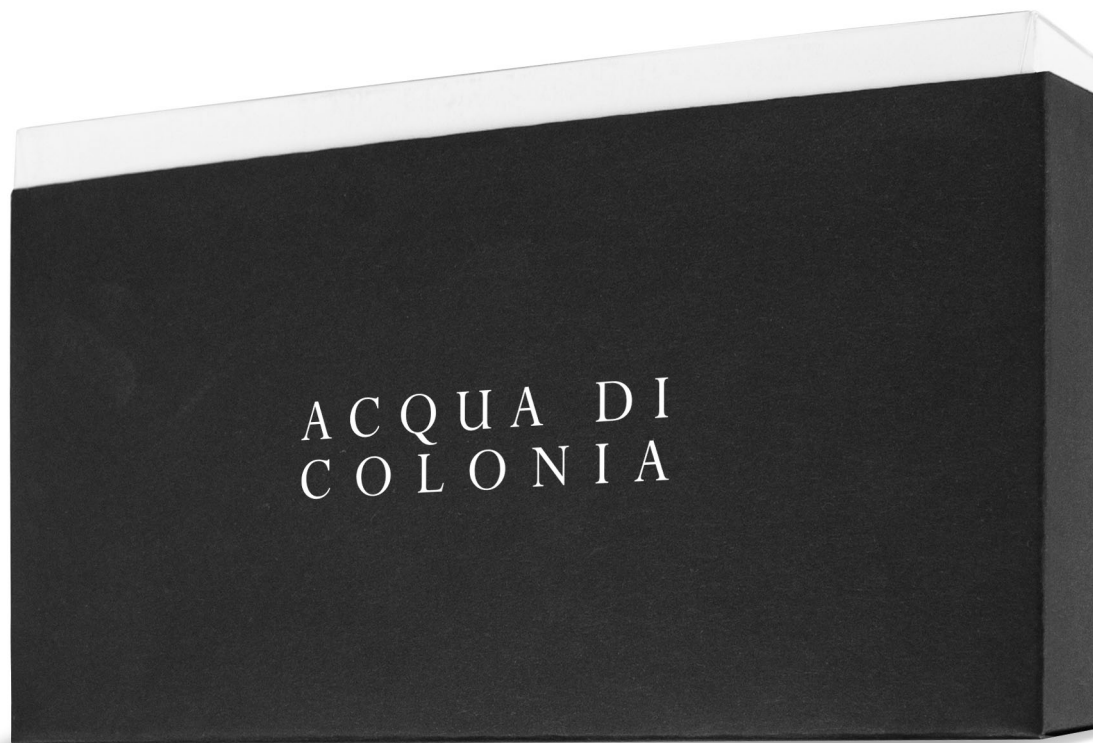
hair  
conditioner

50 ml e 1.76 fl.oz. 

BLACK BOTTLE AND CAP WITH MATT FINISHING LABEL.

ACQUA DI  
COLONIA

a m e n i t i e s   l i n e



COD. 026GIFT106200

gift box

---

RECYCLABLE PAPER BOX CONTAINING  
BOTTLES 50 ml (body lotion, hair conditioner, shampoo, shower gel) AND SOAP 20 g

---



# dispensers



COD. 026BL106209

hands&body  
lotion



COD. 026SG106203

shower gel



COD. 026LS106201

liquid soap



COD. 026SH106206

shampoo



COD. 026HC106205

hair conditioner

BLACK REFILLABLE DISPENSER WITH BLACK PUMP AND MATT FINISHING LABEL. CAN BE COMBINED WITH PLASTIC\* OR STEEL\*\* WALL BRACKET.  
\*wall-applicable with stickers or screws \*\*wall-applicable with screws

300 ml e 10.6 fl.oz. 

# dispensers



## RECOMMENDED SUPPORT

PLASTIC



METAL



PLASTIC SUPPORT CAN BE APPLIED TO THE WALL WITH SCREWS OR WITH ADHESIVE AND METAL SUPPORT CAN BE APPLIED TO THE WALL WITH SCREWS.



allegri<sup>n</sup>i.  
COSMETIC SOLUTIONS

[www.allegriamenities.com](http://www.allegriamenities.com)



# ACQUA DI COLONIA